

VMware ISO einlegen

VMware Remote Console 10.0.2 (VMRC)

Download: <http://my.vmware.com/de/group/vmware/details?downloadGroup=VMRC10.0.2&productId=614>

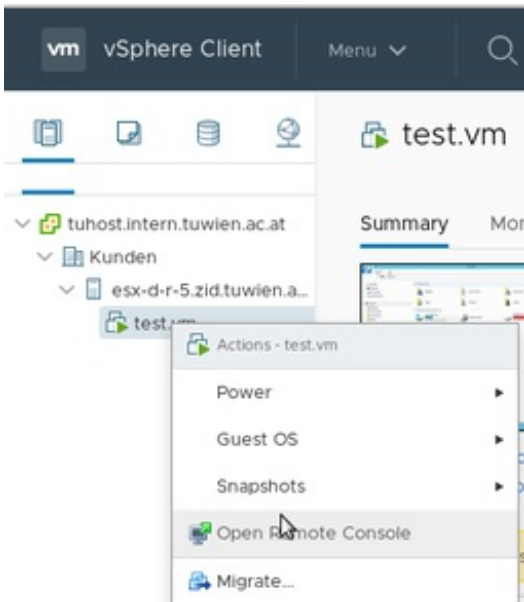
VMRC Guide: <http://docs.vmware.com/de/VMware-Remote-Console/10.0/vmware-remote-console-100-vsphere.pdf>

Connection to: tuhost.intern.tuwien.ac.at

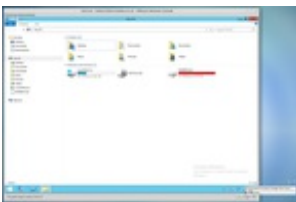
- Chose vSphere Client (HTML5) & Login with your credentials.

Open VMRC:

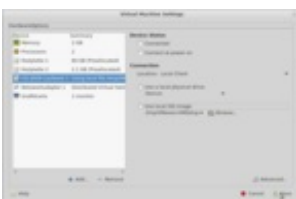
- Right click your VM and select Open Remote Console



Insert_ISO-File_Linux



Settings_Linux

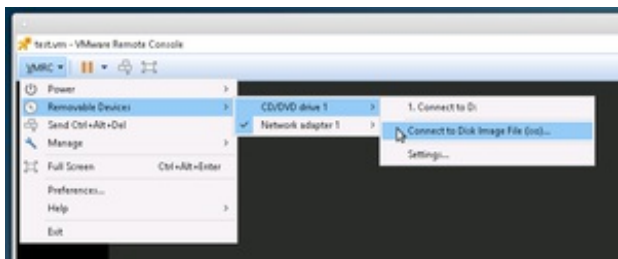


VMRC Linux:

- Click DVD icon in the right bottom corner

- Select Connect to Disk Image File (iso)... and browse to your ISO file
- It could happen that only Disconnected is written. In such case select Settings and make following
 - Connection:
 - Location: Local Client
 - Use local ISO image: Browse to your ISO file.
- Click Save and after this step you should be ready to Connect to Disk Image file (iso)... from the beginning of step 2.1

Insert_ISO_File_Windows



VMRC Windows:

- Click VMRC in the upper left corner and chose Removable Devices → CD/DVD drive # → Connect to Disk Image File (iso)... and brows to your ISO file